

JOINT LEARNING INITIATIVE *on*
FAITH & LOCAL COMMUNITIES

**2017 ANNUAL
REPORT**

Prepared by

Stacy Nam, Knowledge Manager

March 2018

TABLE OF CONTENTS

About	1
Message from Board co-chairs	2
Message from JLI Coordinator	3
How we work	4
2018 Priorities	5
2018 Leadership	6
JLI Learning Hubs	7
2017 Learning Hub Work	8
New Hubs	9
Quick Look: JLI Summary	10
Excellence in Evidence	11
Resource Highlights	12
Publications	13
Excellence in Communications	15
Excellence in Advocacy	16
Sri Lanka: Localizing Response Forum	17
Financial Report	18
Get involved	19
Contact us	20

ABOUT THE JOINT LEARNING INITIATIVE ON FAITH & LOCAL COMMUNITIES (JLI)

The Joint Learning Initiative on Faith & Local Communities (JLI) started in 2012, and was funded, by a broad collaboration of international development organizations, UN agencies, academic institutions and faith groups. This group began based on a single shared conviction: the urgent need to build our collective understanding of the potential of local faith communities for improving community development, health and well being.

JLI Vision

Full and appropriate evidence-based engagement of religious and faith-based groups in the achievement of development and humanitarian goals, including the Sustainable Development Goals through effective partnerships with academic, public sector, secular entities and among religious groups themselves



JLI Annual Leadership Meeting 2018 in London

JLI Staff



JEAN DUFF
COORDINATOR



STACY NAM
KNOWLEDGE MANAGER



OLIVIA WILKINSON
RESEARCH DIRECTOR

MESSAGE FROM THE JLI BOARD CO-CHAIRS

Dear JLI Network,

We are proud to serve as co-chairs of the Joint Learning Initiative on Faith and Local Communities (JLI), a unique international collaboration on evidence for faith groups' activity and contributions the well-being of local communities around the world.

We give special thanks to Matthew Frost, a founder of JLI, for his key role in shaping the JLI during his long service as Board Co-Chair. Jonathan has stepped up as Co-Chair and Rob seeks to provide continuity over the next couple of years.

Thanks to the vibrant joint learning and collaborative ethos of the JLI, to the extensive volunteer contributions of Hub members, to the skilled guidance of Hub co-chairs and the generous contributions of time and experience from Board and Advisory Group members, JLI has developed reputation and credibility as a key knowledge partner on evidence of faith engagement in humanitarian aid, development and health. Quite a feat in 5 years on an impossibly small budget! Collaboration rocks and we are grateful to everyone who has made this possible through an astonishing amount of voluntary effort!

In 2017, JLI published the Refugees and Forced Migration Hub scoping study focusing on localization and urbanization. In addition we completed a DFID-funded study through the Gender-based Violence Hub on Harmful Traditional Practices (page 14) and launched two new Learning Hubs on Ending Violence Against Children and Anti-Human Trafficking and Modern Slavery(see page 9). One of the many innovative JLI collaborations included the Forum in Sri Lanka on Localizing Humanitarian Response: the role of Religious and FBOs (page 17). Thanks to the marvelous JLI team for planning, partnering and implementing these achievements.

At our annual in-person Board meeting October 2017, the JLI Leadership set three ambitious goals to guide JLI operations over the coming years:

1. **Excellence in Evidence:** continue to strengthen the quality and accessibility of the knowledge base; serve as a knowledge partner to organizations seeking to more fully engage the faith community
2. **Excellence in Communications:** communicate more effectively to academics, policy makers and practitioners
3. **Excellence for Advocacy:** encourage change in key areas of policy and practice through evidence-based advocacy and policy on religious engagement in humanitarian and development

To attain these goals will be stretch for our small staff, Hubs and Board Leadership. To support this growth, JLI needs to consolidate its current work and capacities, and increase its resources this year and so fundraising has been identified as a priority for this year.

We are committed to leading the Board to support JLI staff and network as a whole to achieve these ambitious goals and provide the evidence and advocacy that enables those active in this sector to achieve the best possible outcomes for the support they provide.

We are reminded that we do this work to ensure that the unique resources of the world wide religious community are most appropriately and fully engaged in the work of the Sustainable Development Goals and assisting every person to achieve their inherent potential.

Kia kaha (be strong, get stuck in, go for it)



Jonathan Duffy, ADRA International
JLI Board Co-Chairs



Rob Kilpatrick, Triadmission

NOTE FROM THE JLI COORDINATOR

Dear friends:

It's an old saying--

“To go fast, travel alone; to go far, travel together”

--and it surely speaks of our collaboration at JLI this past year!

- Together Stacy Nam and the Learning Hubs encouraged joint learning and multiplied the evidence outputs
- Together the Board and Advisory group brought their vast combined wisdom to the challenge of steering and supporting JLI for excellence and growth
- Together the leadership of local religious leaders, the work of freelance experts and the gifts of partners combined to produce a unique gathering in Sri Lanka of local faith actors and a database of evidence on how to engage
- Together with the Moral Imperative and its Evidence Working Group, the Partnership for Religion and Development (PaRD), the UN Interagency Working Group on Religion and Development, the JLI advanced the evidence base for the ‘why’ and ‘how’ of engagement with faith actors
- Together we have built a unique open-source international evidence-focused network responding now as knowledge partner to the growing interest in the methods and mechanisms of engagement of local faith actors to meet development and humanitarian challenges
- One of the highlights of this great year was a long conversation with Ela Bhatt the founder of the 1.9 million member Self Employed Womens’ Association. The scale and reach of SEWA’s work for livelihoods is a testament to her entrepreneurial spirit and her trust in the power of the collective. She opened my eyes to the power of ‘together’ to deliver for the least powerful.



Jean with Ela Bhatt

None of the progress documented in this Annual Report would be possible without the extraordinary generosity of your time and talent. The JLI collaboration is stretching now to radically improve and grow in the coming years

Desmond Tutu reminds us “God's dream is that you and I and all of us will realize that we are family, that we are made for togetherness, for goodness, and for compassion”

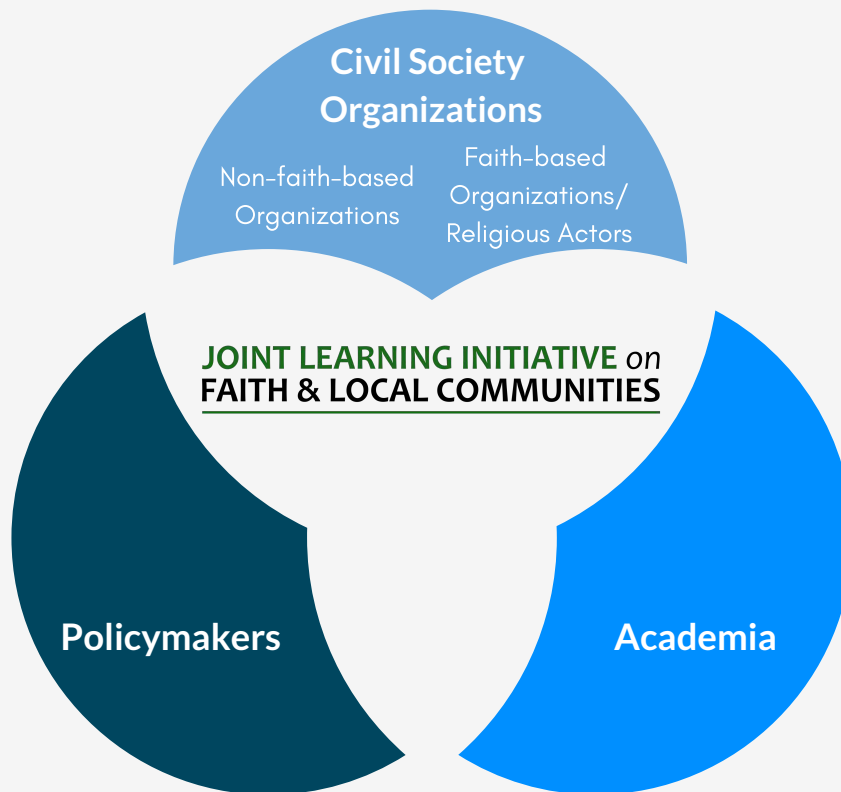
Thank you for the privilege of our ongoing work together!

Jean Duff
JLI Coordinator

JLI KNOWLEDGE PARTNER

How We Work

We serve as an open source, non-partisan knowledge sharing platform for all sectors through the full engagement of faith actors to end poverty and support sustainable development



2018 Priorities

We are committed to pursuing progress in three areas with a focus on inclusion of global south and local actors

Excellence in Evidence

Serve as a knowledge partner to improve the quality, management and accessibility of evidence

Excellence in Communications

Communicate effectively to academics, policy makers and practitioners

Excellence in Advocacy

Encourage change in key areas of policy and practice through evidence-based policy ensuring alignment with agendas in order to be drivers in the engagement of local faith actors

2018 JLI LEADERSHIP

The JLI is led by a 32-member Board (with 9 Executive Committee members - designated with a *) with nine Advisory Group members; all who provide oversight, and leadership on outreach to key decision makers in humanitarian and development entities

JLI BOARD

* Jonathan Duffy

* Rob Kilpatrick

Rudelmar Bueno de Faria

Ruth Messinger

Rachel Carnegie

Rebeca Rios-Kohn

Benjamin Laniado

Kate Bingley

John Blevins

* Rob Radtke

Lucas Koach

Katherine Marshall

Tomy Hendrajati

Rick Santos

Imrana A. Umar

Anwar Khan

* Atallah Fitzgibbon

Mohammed Abu-Nimer

Hiruy Teka

Carlos Mejia

John Drew

* Jean Duff

Amjad Saleem

Matthew Frost

* Ian Causebrook

Dean Pallant

Ayesha Chaudhry

* Jill Olivier

Julie Clague

David Boan

Christine MacMillan

* Christo Greyling

JLI Co-Chair & Adventist Development & Relief Agency

JLI Co-Chair & Traidmission and SmallAlternative

ACT Alliance

American Jewish World Service

Anglican Alliance

Arigatou International

Cadena

Christian Aid

Emory University

Episcopal Relief & Development

Food for the Hungry

Georgetown University

Humanitarian Forum Indonesia

IMA World Health

International Interfaith Peace Corps

Islamic Relief USA

Islamic Relief Worldwide

King Abdullah bin Abdulaziz International Centre for Interreligious and Intercultural Dialogue (KAICIID)

Samaritan's Purse

Oxfam America

Oxford Hospital Systems NHS Trust

Center for Faith and the Common Good

Paths2People

Pilgramway

Tearfund

The Salvation Army

University of British Columbia

University of Cape Town

University of Glasgow

Wheaton College

World Evangelical Alliance

World Vision International

JLI ADVISORY GROUP

Jørn Lemvik

Thomas Lawo

Vinya Ariyaratne

Nobuyuki Asai

Adam Taylor

Christoph Benn

Sally Smith

Caroline Lensing-Hebben

Azza Karam

Independent Consultant

International Partnership on Religion & Development (PaRD)

Sarvodaya

Soka Gokkai International

Sojourners

The Global Fund

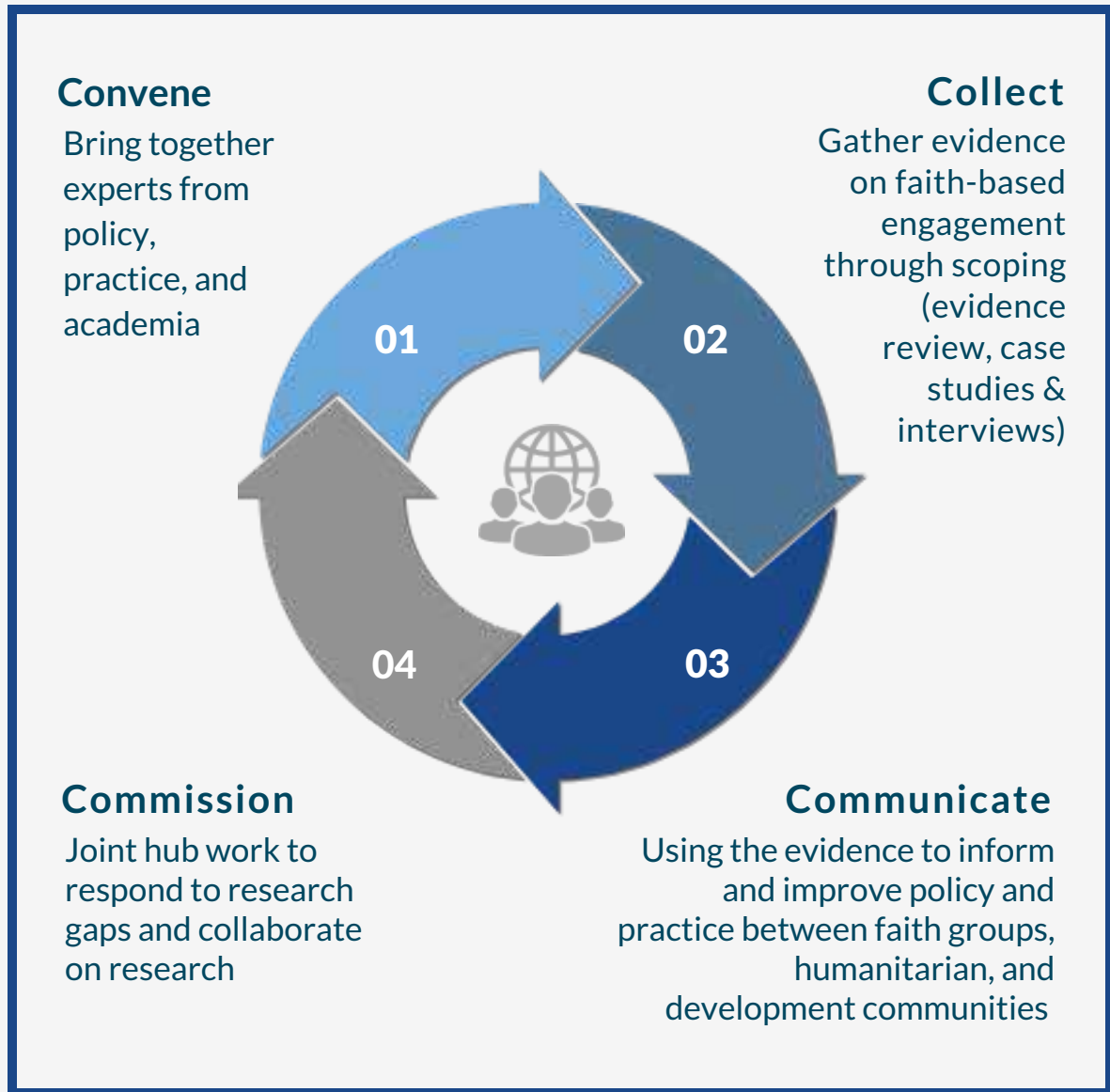
UNAIDS

UNDP

UNFPA

JLI LEARNING HUBS

Learning Hubs are dedicated to **convening multi-sector** collaborations increasing the **evidence of faith engagement to inform and improve policy and practice** between faith groups, humanitarian, and development communities. Collaborate in joint learning with opportunities to share resources, events and news with others in the field.



JOIN NOW!

jliflc.com

CURRENT LEARNING HUBS

The JLI carries out much of its work through five current learning hubs and led by volunteer experts from academia, policy and practice. Learning Hubs have life cycles, usually completing their work in a few years. The work of the inactive Hubs is available through resources menu on the website.



Anti-Human Trafficking and Modern Slavery - aht-ms.jliflc.com

Launched in October 2017

Hub Co-Chairs:

Emma Tomalin, Leeds University

Anne Gregora, The Salvation Army



Ending Violence Against Children - evac.jliflc.com

Launched September 2017

Hub Co-chairs:

Carola Eyber, Queen Margaret University

Robyn Hagan, World Vision International

Rebeca Rios-Kohn, Arigatou International



Gender-based Violence - gender-based-violence.jliflc.com

Hub members: 110

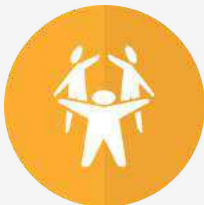
Hub co-chairs:

Liz Dartnall, Sexual Violence Research Institute

Diana Arango, World Bank

Veena O'Sullivan, Tearfund (Secretary) & Natalia Lester-Bush,

Tearfund (Coordinator)



Mobilisation of Local Faith Communities - lfc.jliflc.com

Hub members: 80

Hub co-chairs:

Catriona Dejean, Tearfund

Andrea Kaufmann, World Vision International



Refugees and Forced Migration - refugee.jliflc.com

Hub members: 100

Hub co-chairs:

Elena Fiddian-Qasmiyeh, University College London

Atallah Fitzgibbon, Islamic Relief Worldwide

2017 HUB WORK



GENDER-BASED VIOLENCE

GBV Hub led DFID-funded project on the role of faith in responding harmful traditional practices. Research team included Elisabet le Roux, Stellenbosch, Brenda Bartelink, University of Groningen and Shereen El Feki, Promundo with support from JLI GBV Hub co-chairs, and Hub members

Focused on 5 case studies, survey of the JLI and relevant networks.

- Preliminary study findings presented at the Sexual Violence Research Institute Rio 2017 meeting in September
- The Final Study Report launched and disseminated at DfID Whitehall in November



MOBILISATION OF LOCAL FAITH COMMUNITIES

- May- Presentation at Conference on Humanitarian Action in Doha, Qatar
- Sept- Joint Learning Webinar with Refugee Hub & Oxfam America moderated by Catriona Dejean
- Oct- Case studies of hub member work on engaging local faith actors (including Pastors and Disasters case study presented at Localisation Forum



REFUGEES AND FORCED MIGRATION

Scoping Study Part 1 Completed Oct 2017: "Local Faith Communities in Urban Displacement- Lessons in Urbanisation and Localisation," written by Olivia Wilkinson and Joey Ager

- Study launched with accompanying advocacy brief at Localizing Response to Humanitarian Need Forum, Sri Lanka Oct 17
- Joint Learning Webinar with Mobilisation Hub and Oxfam America on Local Humanitarian Leadership and Faith on Oct 3

NEW LEARNING HUBS



ANTI-HUMAN TRAFFICKING AND MODERN SLAVERY

Launched October 2017

Key Research Questions

- 1) Religion and social justice: What roles do faith actors play in providing services to support trafficked people, and in campaigns in AHT-MS? How and to what extent do these issues, faith and faith actors intersect with other key social justice issues, such as poverty, gender equality, and forced migration? How is prevention best addressed?
- 2) Religion and identity: How are religious identities pertinent in the trafficking domain? (e.g. for trafficked individuals, service providers, activists and perpetrators). To what extent are anti-trafficking support and advocacy services, secular and faith based, able to accommodate the religious identities of trafficked people? How do failures to take this into account matter?



ENDING VIOLENCE AGAINST CHILDREN

Launched September 2017 at Moral Imperative Lunch at UNGA (sponsored by Arigatou International and World Vision International)

Key Research Questions

- 1) Unique contribution of local faith communities – both in relation to ending as well as contributing to violence against children – need to be examined in order to understand their involvement in the perpetuation as well as their positive influence in this sphere. At present no comprehensive overview of the evidence in this area exists.
- 2) Role of faith actors in influencing wider community and formal and informal child protection systems in relation to prevention and response to EVAC need to be investigated to understand the potential that their engagement has for child protection processes.



JLI QUICK LOOK



EVIDENCE

new resources
added to nearly 1000 resource library



COMMUNICATIONS

newsletter subscribers and
14 email campaigns sent



47,600

JLI website page views
with 12,000 visitors



350

members registered
from over 100 organizations



ADVOCACY

convenings hosted and
attended



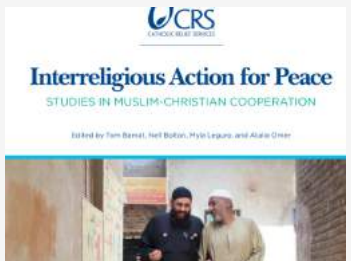
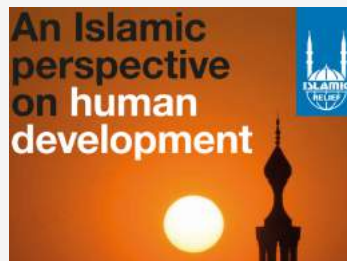
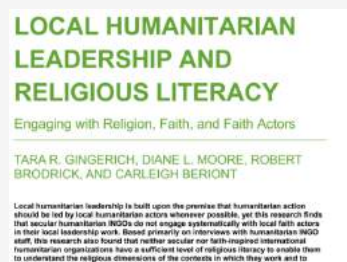
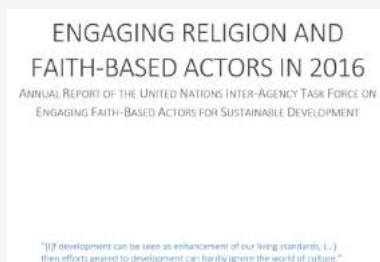
Top Hub Related Resources

Visitors visited JLI Resource library more than **11,494 times (54% increase from 2016)** with **200** new resources added

1. EWG: Tearfund Lightwheel
2. GBV: Harmful Traditional Practices Study
3. Mobilisation of LFCs: Theory of Change
4. Refugee: Scoping Study on Urban Displacement
5. EWG: CRS Beneficiaries Service Delivery Indicator
6. Moral Imperative: Faith-based Framework
7. EWG: Data Gathering Story Telling
8. GBV: Brief- No More 'Harmful Traditional Practices': Working Effectively With Faith Leaders
9. Faith-based Interventions in Peace and Conflict Hub Scoping Study
10. Refugee Hub Scoping Study: Local Faith Communities In Urban Displacement

Most Read Partner Resources

<https://jliflc.com/2017/12/jli-2017-read-partner-resources/>



JLI RESOURCE HIGHLIGHTS

Retired Learning Hubs

All thematic resources are at jliflc.com/resources



HIV & Maternal Health



Immunization



Resilience



Peace & Conflict

Learning Hub Collation

Synthesis of the work of all past Hubs and present Hubs from 2013-2017 including hub work, talking points and power points

View at: jliflc.com/resources/jli-hub-evidence-2017/

Hub co-chairs: Catriona Dejean, Tearfund
Andrea Kaufmann, World Vision International

Hub members: 80

Who are the local faith actors (LFAs)?

What are we learning? Case studies

Communicating Evidence

Local faith actor (LFA) diversity

Current Hub Work

Case studies of hub member work on engaging local faith actors (including Pastors and Disasters case study presented at LRF)

Previous Hub Work

2013- Formalized a theory of change across 12 organizations
2016- Two day working meeting at Trinity College Dublin
2017- Presentation at Conference on Humanitarian Action in Doha, Joint Learning Webinar with Refugee Hub & Oxfam America moderated by Catriona Dejean

Challenges & complexities of mobilization

International Organisations (IOs)	Local Faith Actors
<ul style="list-style-type: none"> Lack of Faith Literacy with whom to engage and how? Concerns about prioritising, portfolio of actors Faith actors work in parallel, not full partnership New financing mechanisms and performance metrics Structural barriers 	<ul style="list-style-type: none"> Development literacy Access to funding and international coordination mechanisms Diverse types of organisation LFAs want to be strengthened, not instrumentalised Small, internal divisions Lack of coordinating mechanisms

What are we learning?

Why mobilize local faith communities for sustainable development?
These are talking points designed to communicate main messages for the mobilisation of local faith communities (LFCs) for sustainable development. The talking points follow the framework below.



1. What is the case for change?

- Localisation:**
 - Humanitarian and development work should be "as local as possible, as international as necessary,"¹ as called for by the former UN Secretary General, Ban Ki Moon, prior to the World Humanitarian Summit in 2016. Faith communities are some of the most crucial local actors. Research from Oxfam highlighted that local actors know the context and needs best, are first-responders, and can be more accountable as they serve their own communities. Yet international donors do not provide appropriate resources to local actors. To prioritise local actors, the aid system needs to build stronger partnerships between international and local actors, as well as putting "greater emphasis on strengthening local capacity."²
- Long-term sustainability:**

Evidence Working Group Guide to Excellence in Evidence For Faith Groups



guide.jliflc.com

In 2016-2017, the JLI Coordinator Jean Duff continued to represent the JLI with Dean Pallant as co-moderators of the Evidence Working Group (EWG) as part of the Moral Imperative. The EWG piloted the Guide to understand whether and how the Guide could be useful as a resource to potential local users.

Based on 33 surveys, the respondents found the Guide found to be useful and diverse. 75% of organizations collect data on faith-inspired metrics.

In the next stage, respondents asked for more detailed information for faith groups that are interested in beginning or improving their evidence collection processes.

Guide Pages

1. Why should faith groups care about evidence?

What is evidence and why is it important?

2. How does faith shape our understanding of evidence?

Faith groups have unique perspectives on evidence, based on our various understandings of how God works in our world.

3. How can faith groups get started or get better at collecting and using evidence?

Practical guidelines and steps to understanding how to get started or improve work with evidence.

Common Terms & Glossary

Guide Library

The Library of Examples below include tools and resources from different faith groups. Each example explains how a particular faith group approaches evidence in one aspect of their work. We hope that you will be able to find examples and resources useful to your own faith group's learning. May these guidelines and examples jumpstart your process of thinking through gathering information, measuring and learning from a faith perspective.

[Click here](#) to submit content for the Library of Examples, or to provide feedback, questions or comments.

Displaying resources 1 to 6 of 6

SHOW: **10** 25 50 100 SORT BY: **DATE** ALPHABETICALLY



Data Gathering and Narrative Based Impact Assessment through Story Telling and Story Collection

Local URI staff and members of the community use storytelling to collect information from URI's grassroots groups about their peacebuilding activities and the activities' impact. Information collection and reflection is usually done through an interview or question and answer format, with notes taken or an audio and video recording. Storytelling is also a collaborative learning tool, which enables grassroots groups and URI as a network to better understand the impact on their communities, and what URI and grassroots Cooperation Circles might do to improve. Storytelling provides meaningful information that can highlight both the strong points and weaknesses of a project, as well as any unintended consequences. Sharing and listening to stories builds bonds of trust and opens doors for relationship, which is essential for creating change.

TAGS: STORY COLLECTION & ANALYSIS, DATA COLLECTION BY LOCAL COMMUNITY

Key Publications

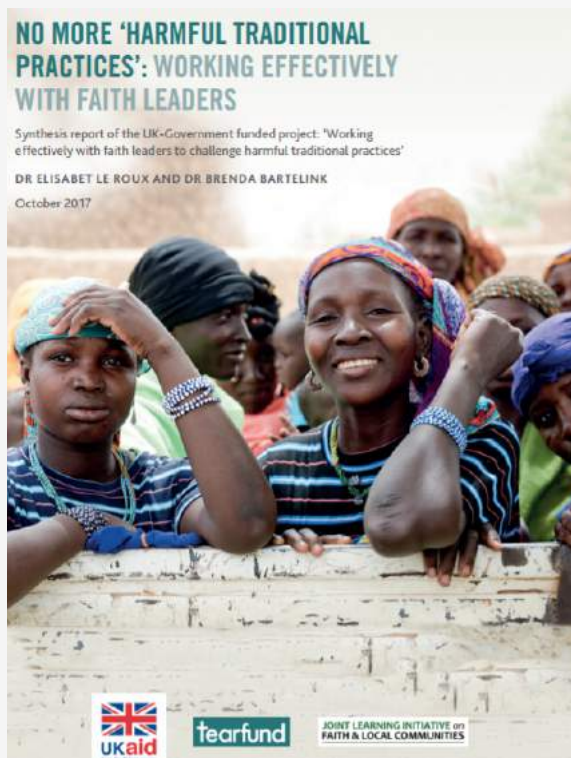
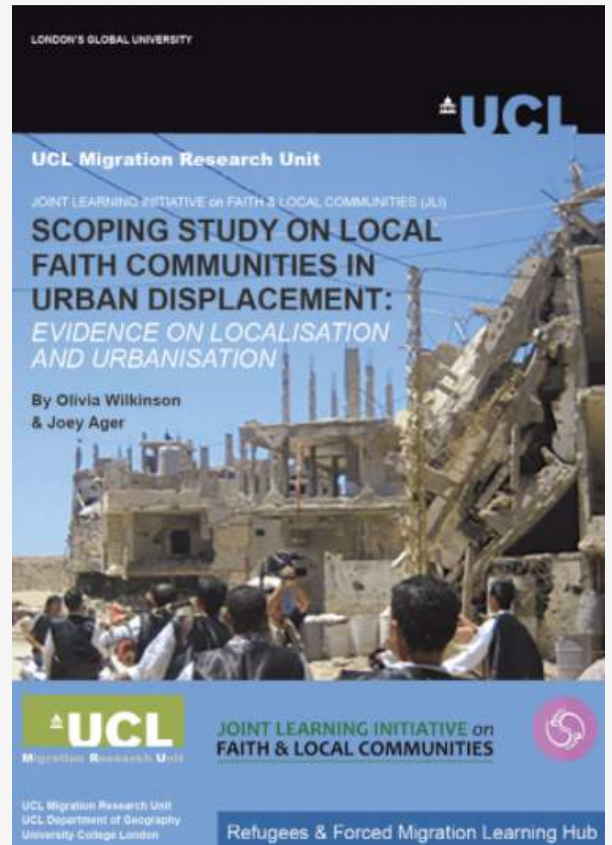
JLI Refugee Hub Scoping Study
Local Faith Communities in Urban
Displacement:
Evidence on Localisation and
Urbanisation

Read at

jliflc.com/resources/jli-refugee-scoping-lfc

Published in October with University
College London and launched at the
Localisation Forum in Sri Lanka

Lead researchers: Olivia Wilkinson, PhD
and Joey Ager



JLI GBV Hub DFID Funded
Harmful Traditional Practices Study

Read at jliflc.com/htp-study/

Launched Nov 2017 at DFID

Lead researchers: Elisabet le Roux PhD
and Brenda Bartelink PhD

Secretariat: Veena O'Sullivan and
Natalia Lester-Bush at Tearfund

COMMUNICATIONS



Regular Communications

Last year JLI introduced monthly emails along with quarterly newsletters to highlight hub work, related resources, new evidence, and events.

In total, JLI sent **14 total** newsletters to 1,300 subscribers (increase of 26% from 2016) while the average number of people opening emails decreased 3% compared to 2016.

Social Media



Follow us!

twitter.com/JLIFLC

Engagement was maintained in 2017 by JLI KM as time allowed. As engagement has become more regular, the top posts this year featured new resources from JLI partners and JLI Hubs. Followers increased to 282 by 81% with engagement increasing by 120% even without paid engagement.

The Refugee Hub piloted the first Hub specific social media account with 200 followers. This could be an avenue to reach out to key policymakers in the future.



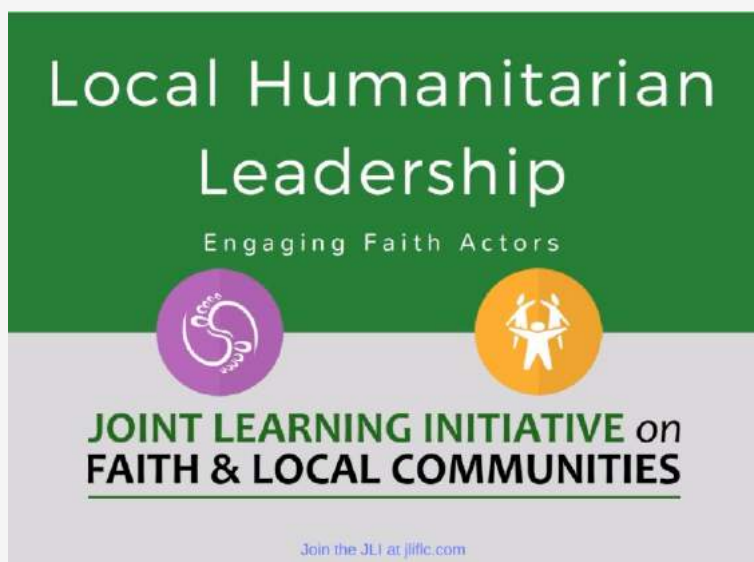
Find us on Facebook:

[JLIFLC.Connect](https://www.facebook.com/JLIFLC.Connect)

Facebook had 115 followers increasing by 50%.

Joint Learning Webinars

JLI began to support and host joint learning opportunities online to better communicate hub work to relevant networks. JLI equipped Board member, David Boan, at a USAID webinar presenting on 'Evaluating the Impact of Faith Groups in Promoting Peace and Stability.'



JLI advised the Religious Literacy project partnership between Oxfam America and Harvard Divinity School. JLI hosted a webinar in September 2017 moderated by Catriona Dejean, Tearfund. Guest Presenter: Tara Gingerich, Oxfam

Recording available:

<https://jliflc.com/2017/09/joint-learning-webinar-oxfam-america/>

ADVOCACY AND PARTNERSHIPS

JLI aims to encourage change in key areas of policy and practice through evidence-based policy ensuring the case of engagement and JLI Hub evidence is presented at key convenings and moments. JLI has an active events calendar at jliflc.com/events-calendar. In 2017, the JLI and its leaders attended more than **47 convenings**, including Harvard Religious Literacy and Humanitarian Aid Symposium, ACHAP's 8th Biennial conference, Conference on International Humanitarian Action: Geneva Platform for the Work of Goodness, UNIATF convened Strategic Learning Exchanges, Ahimsa Conference, UN High Level Political Forum, and World Bosai Forum



UNIATF- Strategic Learning Exchange: Engaging with Faith Organizations & Communities for Sustainable Development in NY, June 2017

International Partnership on Religion and Sustainable Development (PaRD)

- a network on religion and development to enhance cooperation in achieving the 2030 Agenda together. JLI is an active partner of PaRD providing evidence for its three workstreams: gender, sustaining peace and health as possible.
- The JLI is currently involved in the gender equality stream and committed to engaging as the knowledge partner as possible for all work streams.

Moral Imperative:

- JLI serves on steering committee of the Moral Imperative and hosts the Evidence Working Group web presence and advises co-moderators

Leeds University: Keeping Faith in 2030: Religions and the Sustainable Development Goals:

- The network aims to enhance international exchange about the role of religions in defining, implementing, and safeguarding 'sustainable development', as codified in the UN 'Sustainable Development Goals' (SDGs).
- JLI is a senior adviser to this network.

Muslim Platform for Sustainable Development (MPSD):

- platform to exchange knowledge and facilitate collaboration on Muslim understanding of and approach to achieving the SDGs.
- JLI associates with the MPSD

Localizing Response to Humanitarian Need: THE ROLE OF RELIGIOUS AND FAITH-BASED ORGANIZATIONS

SRI LANKA FORUM

October 2017

JLI co-hosted the Localizing Response to Humanitarian Need Forum with 142 participants representing multiple local and global faith networks, faith-based organizations, aid agencies, policy makers, and government representatives have participated in a forum to strengthen partnership and networks in localizing humanitarian response. Focus on documentation of methods and mechanisms of engagement of local faith networks.

Working Areas included:

- Children & Health,
- Conflict & Peacemaking,
- Disaster response,
- Disaster risk reduction and resilience,
- Refugees & Forced Migration,
- Gender-based Violence



Looking Ahead: What and Who Is Needed to Fully Engage Local Faith Actors? Panel



Available online at Irf2017.org:

- Report Summary
- Full Panel Descriptions
- Conference Resources

"If we are really serious about localization we must seek to find ways that will take us to the fruit stalls in the pavements of the Asian cities and the kitchen of the poor mud huts in the villages. It is not easy. We are not trying to drive faith, we are trying to open up a space for faith to drive us."

- Rev Ebenezer Joseph, Co-chair to the Forum, General Secretary, National Christian Council of Sri Lanka

FINANCIAL REPORT

Thanks to our donors!

Since 2012 JLI Operations have been supported by board institutions and a variety of partner institutions. In 2016, the JLI received a 3-year grant from the GHR Foundation that allowed it to increase capacity and hire it's first full time employee, JLI Knowledge Manager, Stacy Nam.

On Jan 1, 2017, the JLI become a project of the US tax exempt platform (the Center for Faith and the Common Good- CFCG). Previously, from 2012-2016, Tearfund UK provided fiscal agency services, and lent its charitable status to the unincorporated JLI project. In 2018, the JLI will consider next steps in institutional platform options: whether to incorporate as a free standing entity.

	Actual 2017 (all #s in \$)
Revenues	
Member institutions	102,022.98
Foundation	150,000
Grants	33,000
Income Total	285,022.98
Expenses	
Personnel	61,546.97
Project Support	101,764.57
Website	8,387.35
Travel	18,305.58
Comms	2500.00
Other	6,402.28
Overhead (9%)	12,000.00
Total	210,906.75

In 2017, the JLI continued to increase support to Learning Hubs, communications and translation of evidence through the Knowledge Manager and a scale up of technical support on a freelance basis.

- GBV LH completed the DFID funded Harmful Traditional Practices Study
- JLI also increased hub related support through supporting the first part of the JLI Refugee Hub scoping study
- The JLI increased travel expenses to ensure representation at key convenings

As of January, 15, the first full-time Research Director, Olivia Wilkinson PhD began her work at JLI. She has her PhD from Trinity College Dublin and expertise in religion and development.

GET INVOLVED

STAY UP TO DATE



Sign up for JLI monthly newsletter
jliflc.com/newsletter



Follow us on Twitter
twitter.com/JLIFLC



Find us on Facebook:
[JLIFLC.Connect](https://www.facebook.com/JLIFLC.Connect)

Join in shared learning today!
Become a member at jliflc.com

CONTRIBUTE EVIDENCE



Share **resources**: case studies, reports,
academic articles to the JLI Resource Library
jliflc.com/resources



SHARE EVENTS

Faith and development events calendar
jliflc.com/event-calendar

CONTACT US!

JOINT LEARNING INITIATIVE ON
FAITH & LOCAL COMMUNITIES

Website: jliflc.com

Address: 1730 M St, NW Suite #1100
Washington DC 20036*

*The JLI Office is now located in shared
space at IMA World Health

Email: contactjli@jliflc.com